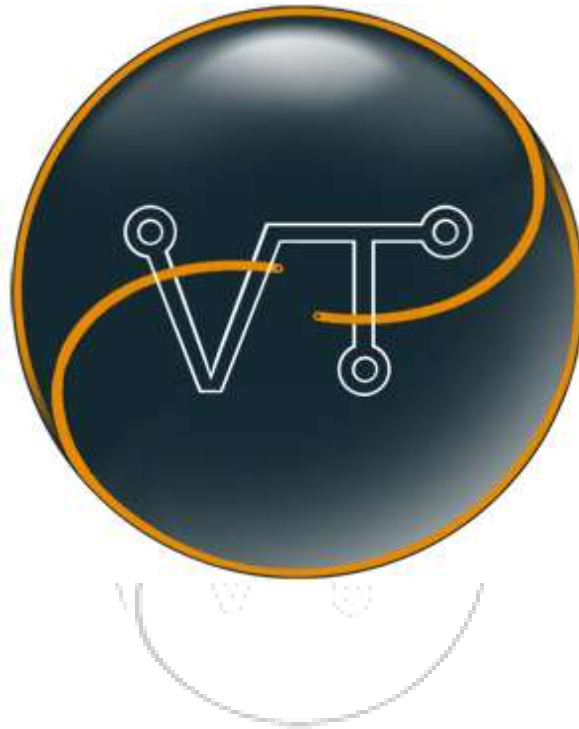


VolvoTech.EU MANUAL



Kind	User manual
Title	User manual for VolvoTech CFE Software(Canbus Function Extender Driver installation)
Language	English
Version	1.0 PUBLIC
Date	September 28 th 2012
Applicable to	CFE with Updater software
Contents	Manual describes installation of the driver in case automatic driver loading fails.



CFE USER MANUAL

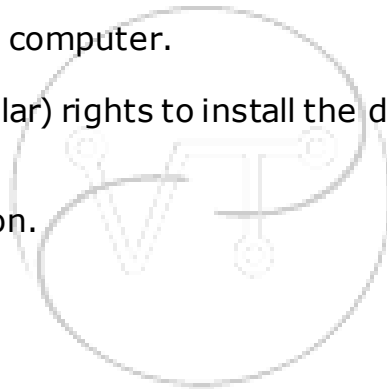
Applicable to:

CFE, VolvoTech's Canbus Function Extender

Sometimes the driver of the CFE for connection to your PC fails to load. This only has to be done ONCE, at any new connection (even with another CFE) driver loading is done automatically or at least initiated by your PC.

Pre requirements for a complete setup:

- CFE module with supplied USB cable
- Power source for the CFE; the supplied battery and connector for that.
- A Microsoft Windows computer.
- Administrator (or similar) rights to install the driver on your PC.
- An internet connection.





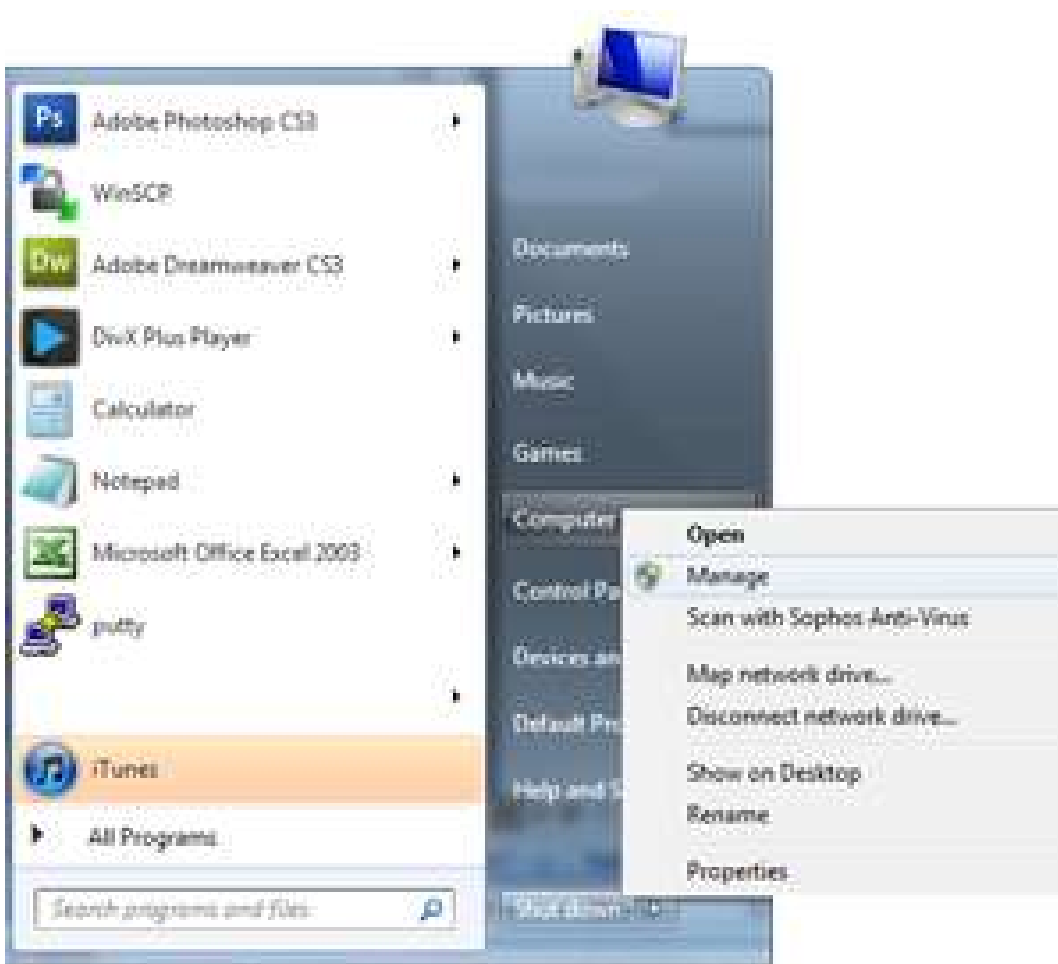
Driver installation:

Step 1:

Make sure the CFE is connected to your PC with the USB cable and the Power supply (Battery and battery/DB9 cable) are connected as well.

Step 2:

Right click on "MY COMPUTER".

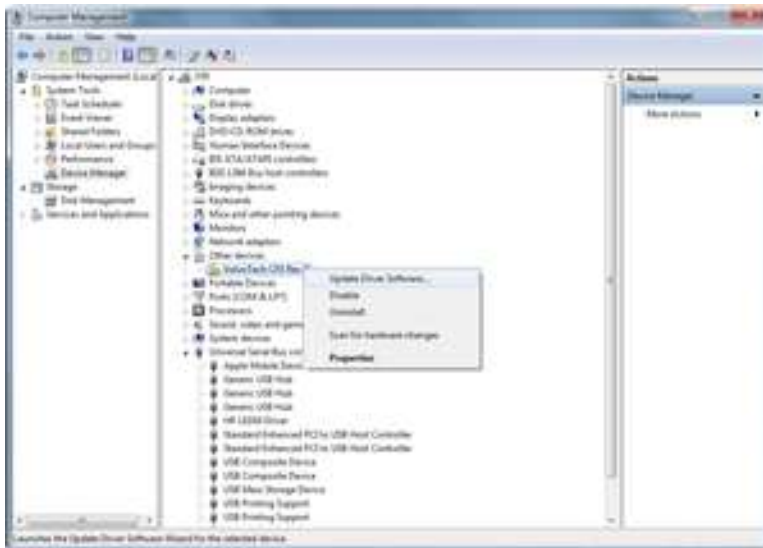




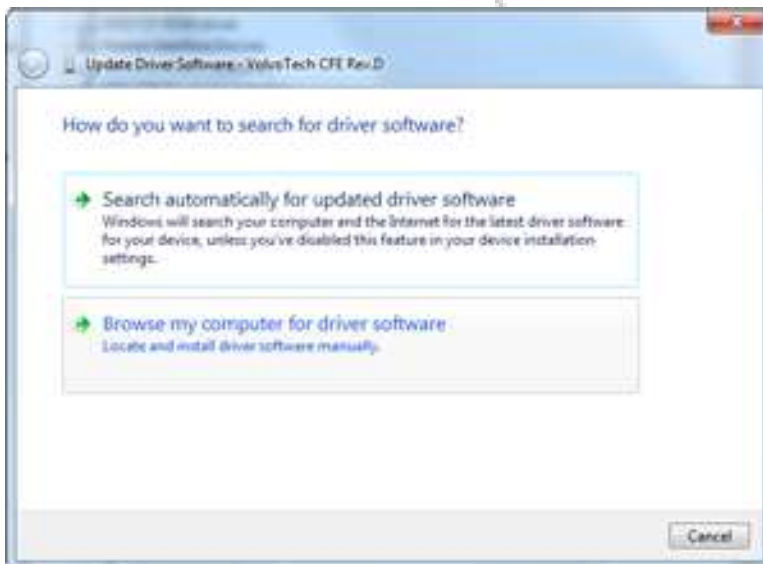
Step 3:

Open "Other devices".

Then find the device with the "!" ("VolvoTech CFE") and right-click and select "properties", next click "Update driver software"



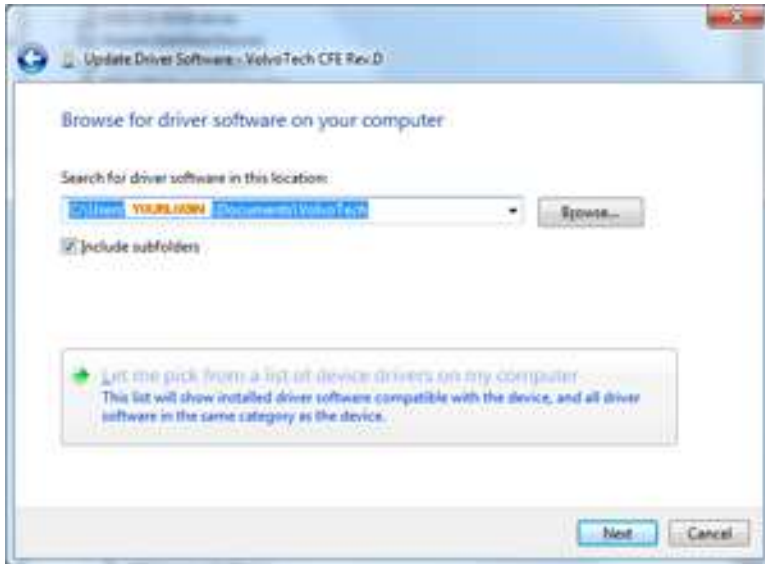
Select "Browse my computer for driver software".



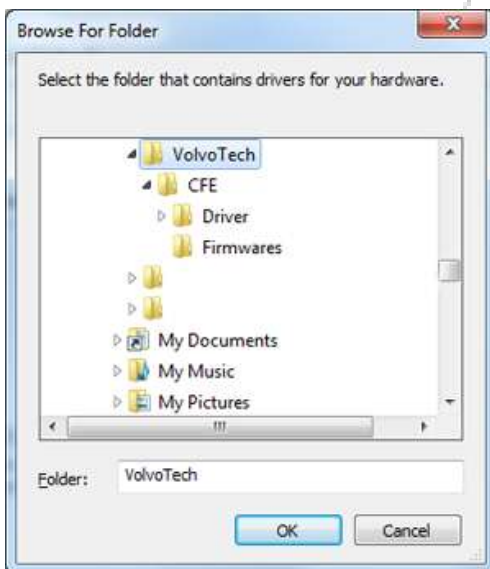


Now either enter directly the full path to the Driver Software:

C:\Users\[YOUR WINDOWS LOGIN NAME]\Documents\VolvoTech



OR browse to it:

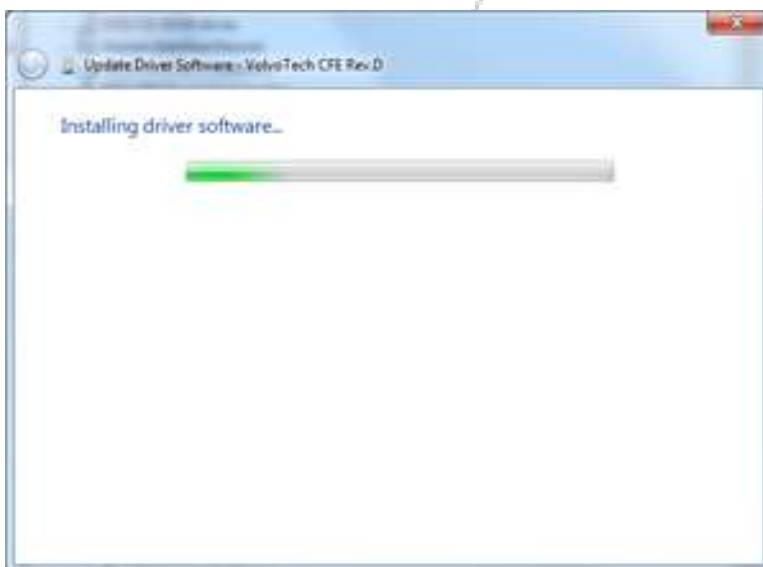




You might get a windows-warning, telling you that the driver/software you are trying to install is not "Verified". Ignore this and select "*Install this driver software anyway*".

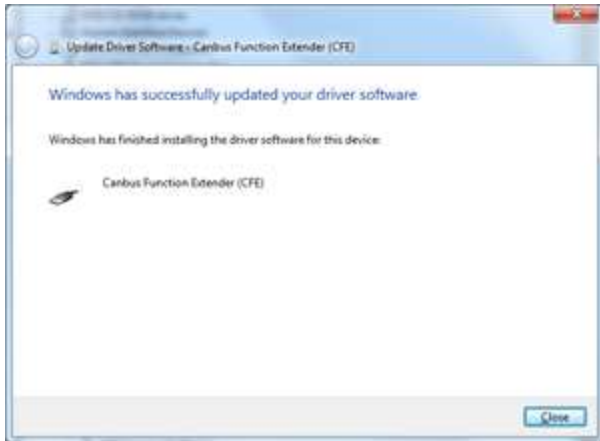


Installation will continue;

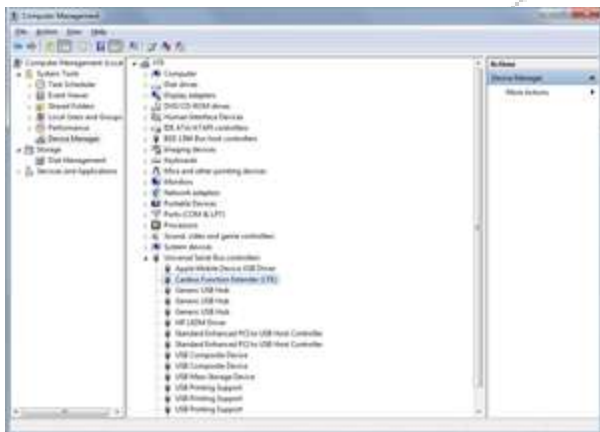




After a short while the installation will be completed confirmed by this screen:



Now you will see the CFE is visible in the device list under USB devices without "!" and can be used.



Now you can use the VolvoTech CFE as in described in the user manual for the CFE Updater which can be found online as well in the product page.